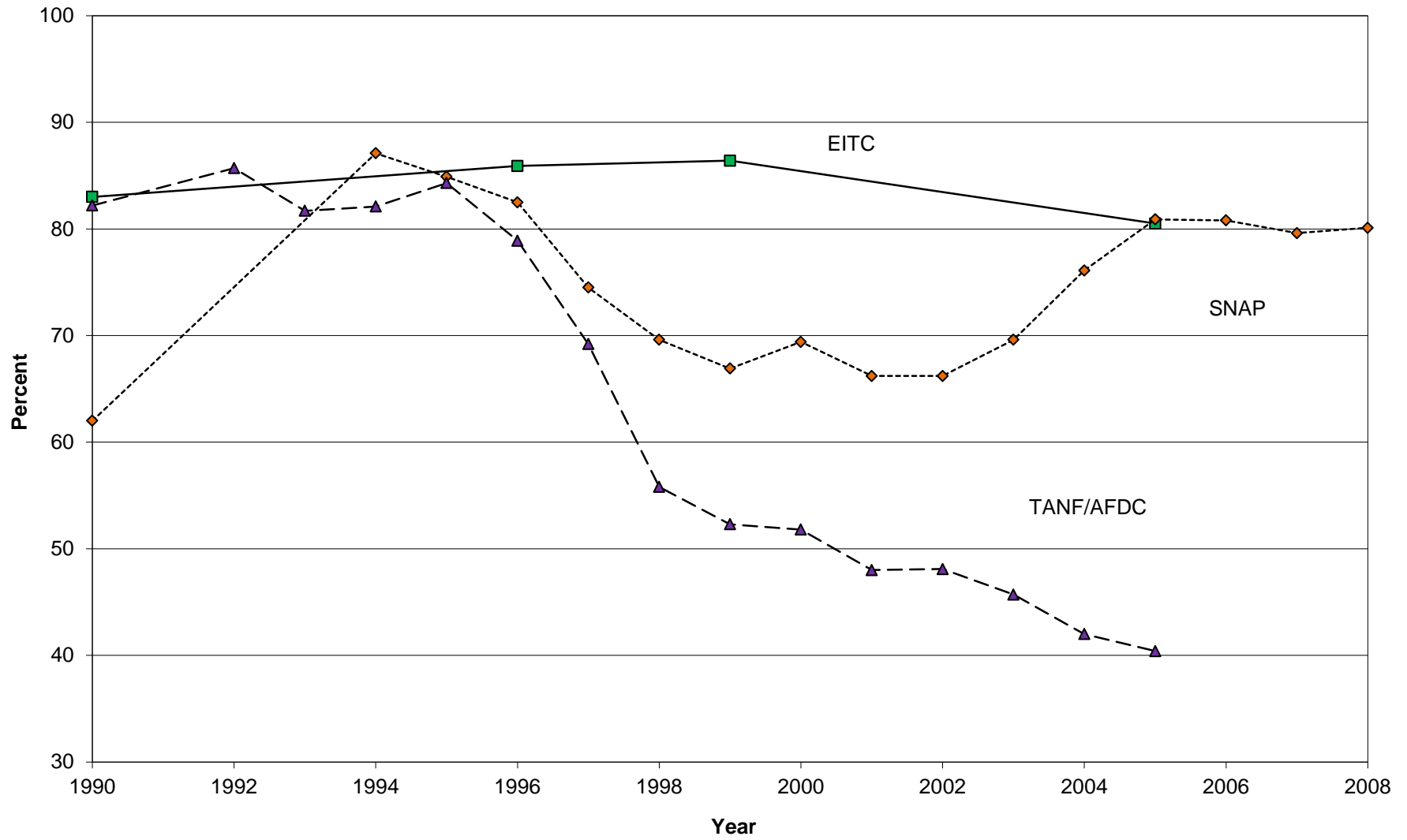


EITC, TANF, and SNAP Participation Rates Among Families with Children



Notes: Scholz estimated an 80 to 86 percent 1990 EITC participation rate; the number reported here is the midpoint.

Food stamp participation rates for 1990 to 1999 are the rates in September of each year.

Participation rates for 2000 to 2008 are averaged rates for each fiscal year.

TANF participation rates are estimated by an Urban Institute model (TRIM3) that uses CPS data to simulate AFDC/TANF eligibility and participation for an average month, by calendar year. There have been small changes in estimating methodology over time, due to model improvements and revisions to the CPS. Most notably in 1997 and 1998 the model was adjusted to more accurately exclude ineligible immigrants. This table reports the 1994 revised estimates and the 1997 and 1998 (and beyond) adjusted estimates.

Sources:

1990 EITC: John Karl Scholz, "The Earned Income Tax Credit: Participation, Compliance, and Antipoverty Effectiveness," National Tax Journal Volume 47, Number 1 (March 1994), 63-87.

1996 EITC: "Participation in the Earned Income Tax Credit Program For Tax Year 1996," project of the Internal Revenue Service prepared by SB/SE Research (January 31, 2002).

1999 EITC: GAO, "Earned Income Tax Credit Participation," GAO-02-290R (December 2001). Available at <http://www.gao.gov/new.items/d02290r.pdf>

2005 EITC: Dean Plueger, "Earned Income Tax Participation Rate for Tax Year 2005," Internal Revenue Service (2009). Available at <http://www.irs.gov/pub/irs-soi/09resconeitcpart.pdf>

1990 Food stamps: Scott Cody and Carole Trippe, "Trends in FSP Participation Rates: Focus on August 1995," Mathematica Policy Research (October 1997). Available at <http://www.fns.usda.gov/oane/MENU/Published/FSP/FILES/Participation/TRENDS95.PDF>

1994-1999 Food stamps: Randy Rosso, "Trends in Food Stamp Program Participation Rates: 1994 to 1999," Mathematica Policy Research (October 2001). Available at <http://www.fns.usda.gov/oane/MENU/Published/FSP/FILES/Participation/1999TrendsReport.pdf>

2000 Food stamps: Kari Wolkwitz, "Trends in Food Stamp Participation Rates: 1999 to 2005," Mathematica Policy Research (June 2007). Available at <http://www.fns.usda.gov/oane/MENU/Published/FSP/FILES/Participation/Trends1999-2005.pdf>

2001-2008 Food Stamps / SNAP: Joshua Leftin, "Trends in Supplemental Nutrition Assistance Program Participation Rates: 2001 to 2008," Mathematica Policy Research (June 2010). Available at <http://www.fns.usda.gov/oane/MENU/Published/SNAP/FILES/Participation/Trends2001-2008.pdf>

AFDC/TANF: "Indicators of Welfare Dependence: Annual Report to Congress 2008," Chapter II. Available at <http://aspe.hhs.gov/hsp/indicators08/ch2.pdf>